

# Luggers

Intersteel Luggers allow loads to be evenly distributed within the container with its unique v-shaped design. The tapered design allows for convenient, stackable shipping, saving you time and money. Intersteel Luggers are the perfect choice for scrap metal recycling - but are also preferred for roof demo projects, concrete/brick/rock disposal or for heavy hauling needs. All luggers are finished with non-lift primer and a double coat of paint.

## FEATURES

- Available in 12 and 20 cubic yards

## OPTIONS

- Heavy Duty
  - Floor 1/4" steel plate
  - Front Wall 1/4" steel plate
- High Back/Low Back Opening
- Light Duty
  - Available in low back configuration only
  - C3x4.1 support channels
  - No internal corner gussets
- Floor impact bars
- Tie down hooks
- Drainage holes

## SPECIFICATIONS

- Walls 3/16" steel plate
- Floor 3/16" steel plate
- Support Channels C4x5.4
- 2" solid lifting lugs welded through the side channel and wall sheet with 1/4" backing plate
- Internal corner gussets 7ga steel sheet



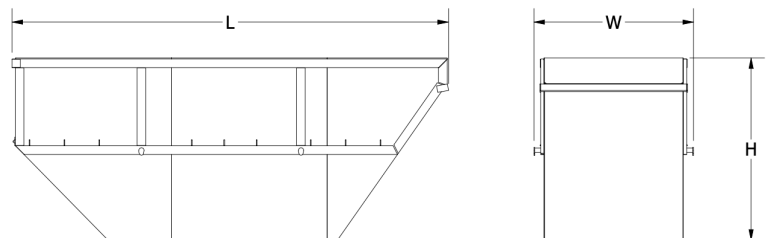
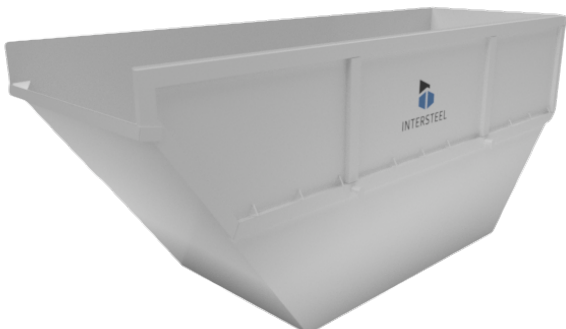
Listed dimensions are standard, however all containers can be custom made according to your specifications

### Welding

- All inner seams are continuous welds

### Painting

- One coat of industrial enamel primer on all surfaces
- Two coats of industrial enamel paint in any single colour (Custom colours available)



MODEL	YARDAGE	LENGTH (in)	WIDTH (in)	HEIGHT (in)
LG-12	12	153	73.75	72.5
LG-20	20	201.75	73.75	84